

YEAR

2013

LINK D'AGUILAR ST (from QUEEN'S RD C to WYNDHAM ST)

COVERAGE (B) STATION

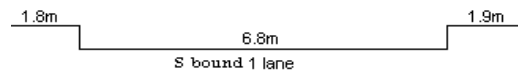
2404

ROAD NETWORK

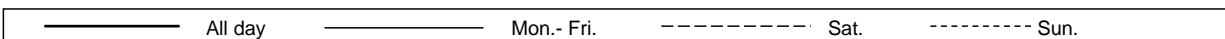
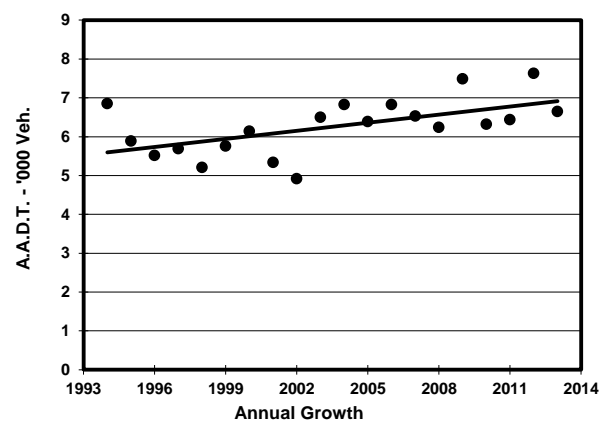
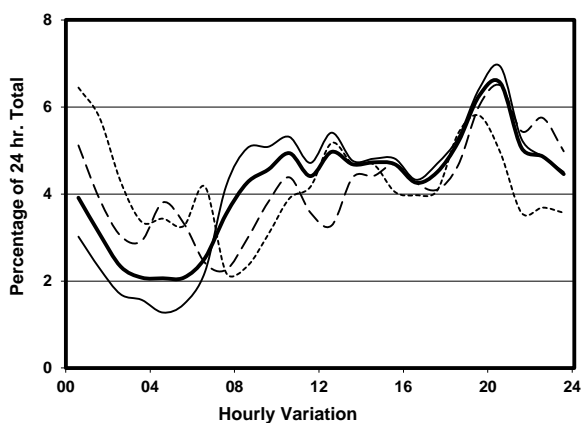
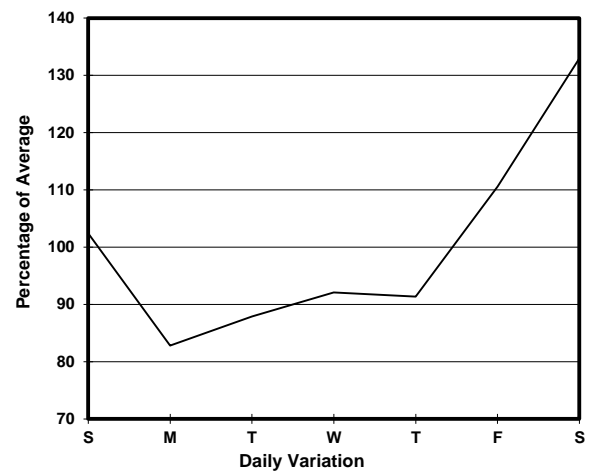
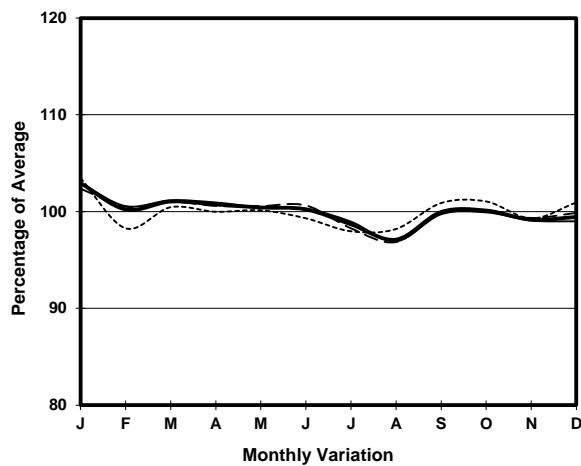
MINOR

ROAD TYPE

LOCAL DISTRIBUTOR



1. TRAFFIC FLOW VARIATION AND GROWTH



2. TRAFFIC CHARACTERISTICS (BY DIRECTION)

| Parameter | All - Day | Mon. - Fri. | Sat. | Sun. |
|--------------------------------------|-----------|-------------|-----------|-----------|
| SOUTH BOUND | | | | |
| A.A.D.T. | 6650 | 6160 | 8800 | 6790 |
| R 12 / 24 - % | 54.7 | 58.5 | 46.8 | 47.7 |
| R 16 / 24 - % | 77.5 | 81.9 | 70.5 | 65.7 |
| AM Peak Hour | 0900-1000 | 0900-1000 | 0900-1000 | 0900-1000 |
| One-way flow at AM peak hour | 300 | 310 | 340 | 210 |
| T - % (AM) | - | 6.6 | - | - |
| PM Peak Hour | 1800-1900 | 1800-1900 | 1800-1900 | 1800-1900 |
| One-way flow at PM peak hour | 350 | 330 | 410 | 370 |
| T - % (PM) | - | 6.6 | - | - |
| Prop.of commercial vehicles - 16 hr. | - | 6.9 | - | - |
| A.A.D.T. | - | - | - | - |
| R 12 / 24 - % | - | - | - | - |
| R 16 / 24 - % | - | - | - | - |
| AM Peak Hour | - | - | - | - |
| One-way flow at AM peak hour | - | - | - | - |
| T - % (AM) | - | - | - | - |
| PM Peak Hour | - | - | - | - |
| One-way flow at PM peak hour | - | - | - | - |
| T - % (PM) | - | - | - | - |
| Prop.of commercial vehicles - 16 hr. | - | - | - | - |

3. OTHER INFORMATION AND COMMENT

4. Vehicle classification and occupancy - Monday to Friday

| Time | | Class of vehicle | | | | | | | | | |
|------------------------|-----|------------------|----------------|------|---------------|-----|------------|-------|----------------|---------|------|
| | | Motor Cycle | Private Car | Taxi | Private LB | PLB | Goods veh. | | Non Fr. Bus | Fr. Bus | |
| | | | | | | | Light | M & H | | SD | DD |
| 0700-0800 | Pro | 1.6 | 6.3 | 68.0 | 1.6 | 0.0 | 14.2 | 1.6 | 0.0 | 3.2 | 3.6 |
| | Ocp | 1.0 | 1.8 | 1.5 | 3.0 | 0.0 | 1.2 | 2.0 | 0.0 | 17.1 | 17.8 |
| 0800-0900 | Pro | 2.7 | 12.3 | 68.5 | 0.0 | 0.0 | 9.6 | 1.4 | 0.0 | 2.7 | 2.7 |
| | Ocp | 1.0 | 1.2 | 1.5 | 0.0 | 0.0 | 1.9 | 1.0 | 0.0 | 27.6 | 23.9 |
| 0900-1000 | Pro | 1.2 | 16.8 | 52.7 | 0.0 | 0.0 | 22.8 | 1.2 | 0.0 | 2.4 | 3.0 |
| | Ocp | 1.0 | 1.4 | 1.5 | 0.0 | 0.0 | 1.9 | 1.0 | 0.0 | 22.0 | 15.0 |
| 1000-1100 | Pro | 1.6 | 29.6 | 29.6 | 3.1 | 0.0 | 23.3 | 4.7 | 1.6 | 2.3 | 4.3 |
| | Ocp | 1.0 | 1.6 | 1.8 | 2.5 | 0.0 | 1.3 | 1.0 | 10.0 | 12.5 | 9.5 |
| 1100-1200 | Pro | 0.0 | 47.3 | 33.1 | 0.0 | 0.0 | 11.8 | 0.0 | 0.0 | 1.8 | 5.9 |
| | Ocp | 0.0 | 1.5 | 1.8 | 0.0 | 0.0 | 1.4 | 0.0 | 0.0 | 9.7 | 10.5 |
| 1200-1300 | Pro | 0.0 | 35.9 | 43.1 | 0.0 | 0.0 | 14.4 | 0.0 | 0.0 | 1.8 | 4.9 |
| | Ocp | 0.0 | 1.2 | 1.8 | 0.0 | 0.0 | 2.1 | 0.0 | 0.0 | 15.3 | 11.6 |
| 1300-1400 | Pro | 0.0 | 27.0 | 38.2 | 0.0 | 0.0 | 24.7 | 2.2 | 0.0 | 2.8 | 5.1 |
| | Ocp | 0.0 | 1.1 | 1.9 | 0.0 | 0.0 | 2.1 | 2.0 | 0.0 | 13.4 | 13.2 |
| 1400-1500 | Pro | 5.6 | 44.4 | 22.2 | 0.0 | 0.0 | 18.5 | 0.0 | 1.9 | 2.3 | 5.1 |
| | Ocp | 1.0 | 1.1 | 2.1 | 0.0 | 0.0 | 1.7 | 0.0 | 1.0 | 16.8 | 12.5 |
| 1500-1600 | Pro | 0.0 | 42.8 | 35.3 | 0.0 | 0.0 | 14.9 | 0.0 | 0.0 | 2.3 | 4.7 |
| | Ocp | 0.0 | 1.3 | 1.9 | 0.0 | 0.0 | 1.6 | 0.0 | 0.0 | 15.2 | 14.7 |
| 1600-1700 | Pro | 4.5 | 38.0 | 33.5 | 0.0 | 0.0 | 15.6 | 0.0 | 0.0 | 2.8 | 5.6 |
| | Ocp | 1.0 | 2.1 | 2.1 | 0.0 | 0.0 | 1.7 | 0.0 | 0.0 | 18.8 | 19.6 |
| 1700-1800 | Pro | 1.9 | 26.3 | 54.5 | 0.0 | 0.0 | 7.5 | 0.0 | 1.9 | 3.8 | 4.2 |
| | Ocp | 1.0 | 1.4 | 2.1 | 0.0 | 0.0 | 1.3 | 0.0 | 6.0 | 22.1 | 20.2 |
| 1800-1900 | Pro | 2.0 | 50.8 | 38.6 | 0.0 | 0.0 | 2.0 | 0.0 | 0.0 | 2.5 | 4.1 |
| | Ocp | 1.0 | 1.7 | 2.0 | 0.0 | 0.0 | 1.0 | 0.0 | 0.0 | 34.6 | 36.4 |
| 1900-2000 | Pro | 2.2 | 24.0 | 67.6 | 0.0 | 0.0 | 2.2 | 0.0 | 0.0 | 1.4 | 2.7 |
| | Ocp | 1.0 | 1.5 | 2.5 | 0.0 | 0.0 | 2.5 | 0.0 | 0.0 | 37.2 | 30.7 |
| 2000-2100 Peak hour | Pro | 4.4 | 18.8 | 70.9 | 0.0 | 0.0 | 2.2 | 1.1 | 0.0 | 1.1 | 1.4 |
| | Ocp | 1.0 | 1.6 | 2.6 | 0.0 | 0.0 | 1.5 | 3.0 | 0.0 | 22.3 | 17.0 |
| 2100-2200 | Pro | 9.5 | 20.6 | 64.8 | 1.6 | 0.0 | 0.0 | 0.0 | 0.0 | 1.6 | 2.0 |
| | Ocp | 1.0 | 1.8 | 2.3 | 1.0 | 0.0 | 0.0 | 0.0 | 0.0 | 19.8 | 12.6 |
| 2200-2300 | Pro | 0.0 | 15.5 | 77.3 | 0.0 | 0.0 | 2.2 | 0.0 | 0.0 | 2.2 | 2.8 |
| | Ocp | 0.0 | 1.7 | 2.4 | 0.0 | 0.0 | 1.0 | 0.0 | 0.0 | 17.8 | 15.2 |
| 16 hours | Pro | 2.5 | 26.7 | 52.2 | 0.4 | 0.0 | 11.2 | 0.8 | 0.3 | 2.2 | 3.6 |
| | Ocp | 1.0 | 1.5 | 2.0 | 2.3 | 0.0 | 1.7 | 1.5 | 5.7 | 20.6 | 17.3 |

Legend

Pro. Proportion of vehicles in % (Sum may not add up to 100% due to figure rounding)
Ocp. Average occupancy of vehicles
M&H Medium and Heavy